

**ez-SHV+**

# SDI to HDMI Converter with Display and Scaler

Operation manual



REVISION NUMBER: 1.0.0

DISTRIBUTION DATE: NOVEMBER. 2018

### **Copy Rights**

**Copyright © 2006~2018 LUMANTEK Co., Ltd.**

**All Rights Reserved**

This document contains information that is proprietary to LUMANTEK.CO., LTD. The information in this document is believed to be accurate and reliable; however, LUMANTEK assumes no responsibility or liability for any errors or inaccuracies that may appear in this document, nor for any infringements of patents or other rights to third parties resulting from its use.

This publication may contain technical issues, inaccurate information or typos. These will be revised in revised edition, if there is any. No part of this publication is subject to be reproduced, stored in retrieval system, or transmitted in any forms, or any means without the prior consent by Lumantek.

### **Trademarks**

HD ENCODULATOR TM, SD ENCODULATOR TM LUMANTEK Logo, Mega CruiserTM, ORIXTM, X-CruiserTM, DTA-PlusTM, Media BlasterTM, are Trademarks of Lumantek. Co., Ltd.

Any other trademarks than stated above in this document belongs to its pertinent corporation.

### **Warranty Period**

Lumantek's products comes with One(1) year limited warranty. Please contact below if you need more information.

### **LUMANTEK CUSTOMER SERVICES**

**gs@lumantek.com**

**TEL: +82-2-6947-7400**

**FAX: +82-2-6947-7440**

**LUMANTEK**



# 01. ez-SHV+ (SDI to HDMI Converter with Display and Scaler)

Lumantek's ez-SHV+ is an SDI to HDMI converter with Display and Scaler. The ez-SHV+ does more than just converting. Through its 2.7 inch TFT-LCD, it displays the video input. The display also shows an eye pattern for video quality monitoring, the resolution of incoming video and approximate cable length relative to the quality of the video.

## Features

### ① Inputs & outputs

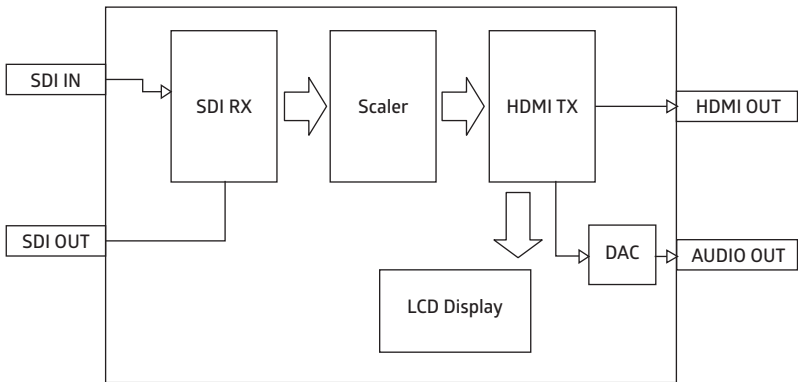
- Input: 1 x SD/HD/3G-SDI (BNC 75Ω)
- Output: 1 x SD/HD/3G HDMI (Type A)
- 1 x SD/HD/3G-SDI loop (BNC 75Ω)
- 1 x Analog audio stereo

### ② Supports SD/HD/3G

### ③ TFT-LCD Display (2.7 inch)

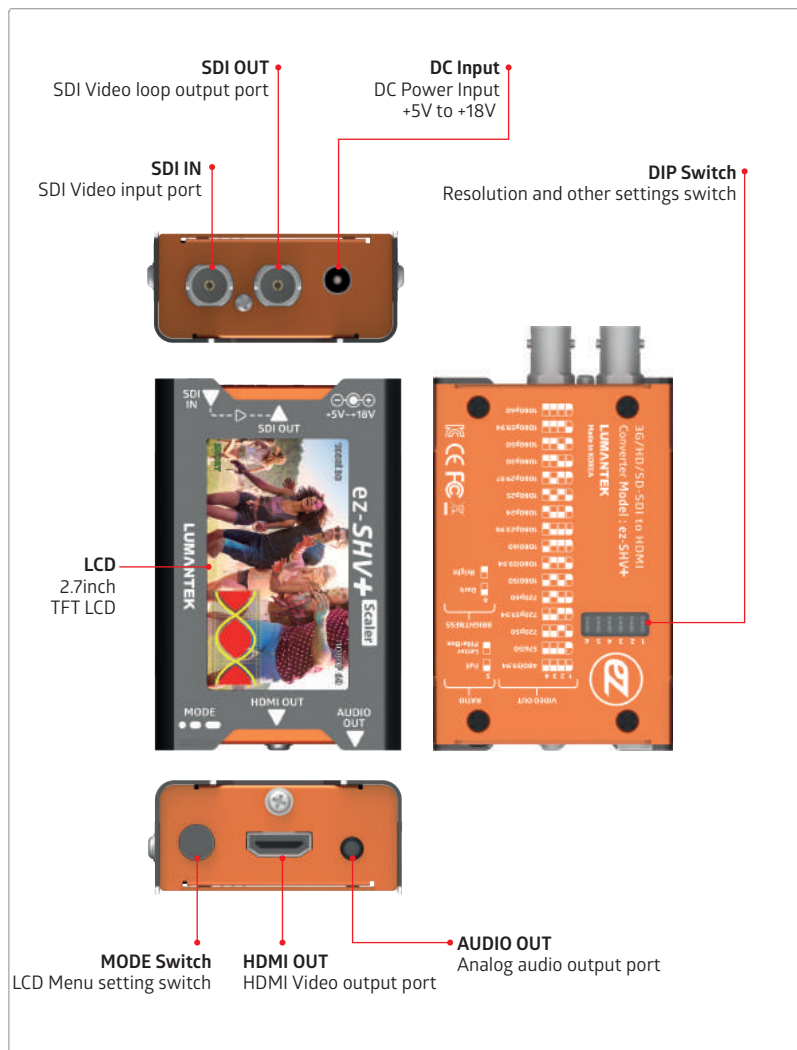
### ④ Push switch for mode change

## Diagram



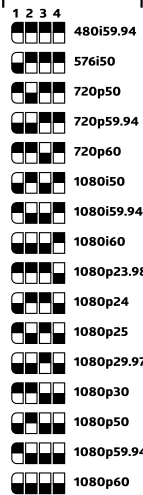


## 02. Interface

### Specifications



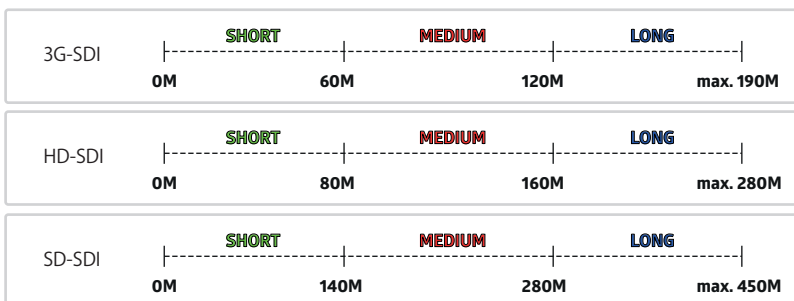
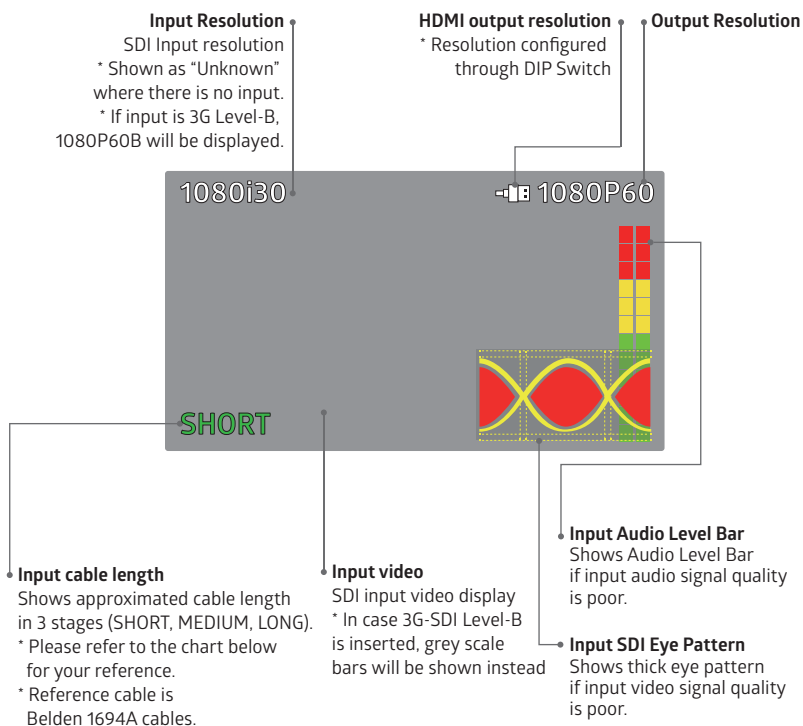
## 02. Interface

### DIP Switch Settings

<p><b>VIDEO OUT</b></p>  <p>1 2 3 4</p> <p>480i59.94</p> <p>576i50</p> <p>720p50</p> <p>720p59.94</p> <p>720p60</p> <p>1080i50</p> <p>1080i59.94</p> <p>1080i60</p> <p>1080p23.98</p> <p>1080p24</p> <p>1080p25</p> <p>1080p29.97</p> <p>1080p30</p> <p>1080p50</p> <p>1080p59.94</p> <p>1080p60</p>	<p><b>VIDEO OUT : Video output resolution (Position 1, 2, 3, 4)</b></p> <ul style="list-style-type: none"><li>- 720x480i@59.94 (DIP SW : 1111)</li><li>- 720x576i@50 (DIP SW : 0111)</li><li>- 1280x720p@50 (DIP SW : 1011)</li><li>- 1280x720p@59.94 (DIP SW : 0011)</li><li>- 1280x720p@60 (DIP SW : 1101)</li><li>- 1920x1080i@50 (DIP SW : 0101)</li><li>- 1920x1080i@59.94 (DIP SW : 1001)</li><li>- 1920x1080i@60 (DIP SW : 0001)</li><li>- 1920x1080p@23.98 (DIP SW : 1110)</li><li>- 1920x1080p@24 (DIP SW : 0110)</li><li>- 1920x1080p@25 (DIP SW : 1010)</li><li>- 1920x1080p@29.97 (DIP SW : 0010)</li><li>- 1920x1080p@30 (DIP SW : 1100)</li><li>- 1920x1080p@50 (DIP SW : 0100)</li><li>- 1920x1080p@59.94 (DIP SW : 1000)</li><li>- 1920x1080p@60 (DIP SW : 0000)</li></ul>
<p><b>RATIO</b></p>  <p>5</p> <p>Full</p> <p>Letter</p> <p>PillarBox</p>	<p><b>RATIO : Video output screen ratio (Position 5)</b></p> <ul style="list-style-type: none"><li>- FULL 16:9 (DIP SW : 1)</li><li>- Latter 4:3 or Pillar Box (DIP SW : 0)</li></ul>
<p><b>BRIGHTNESS</b></p>  <p>6</p> <p>Dark</p> <p>Bright</p>	<p><b>BRIGHTNESS : LCD brightness (Position 6)</b></p> <ul style="list-style-type: none"><li>- Dark (DIP SW : 1)</li><li>- Bright (DIP SW : 0)</li></ul>

## 02. Interface

### LCD Display

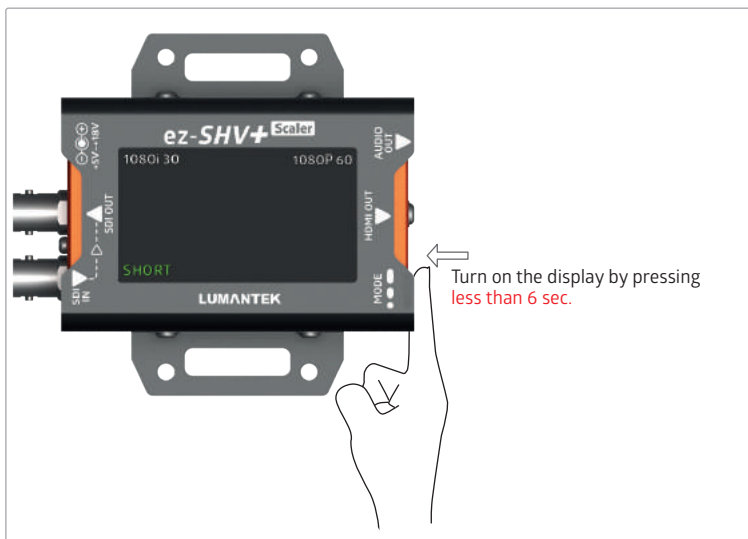
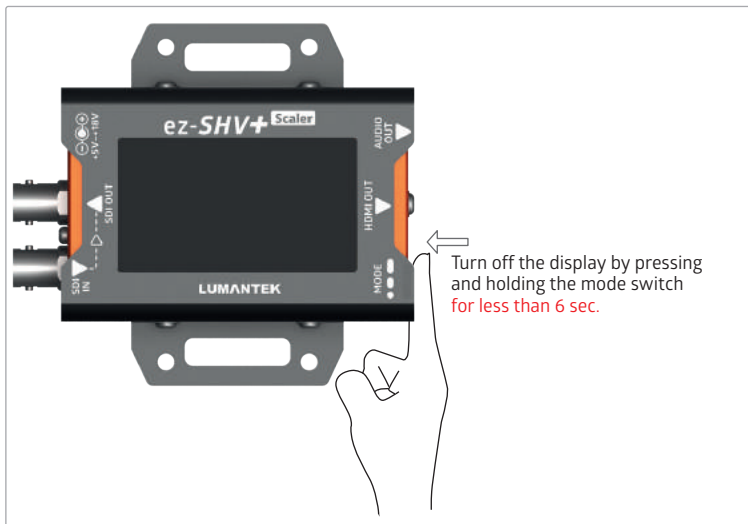




## 02. Interface

### LCD Display

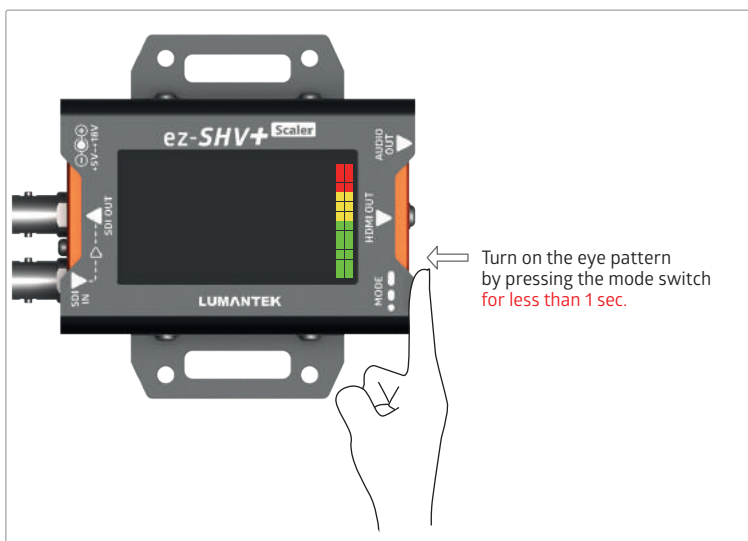
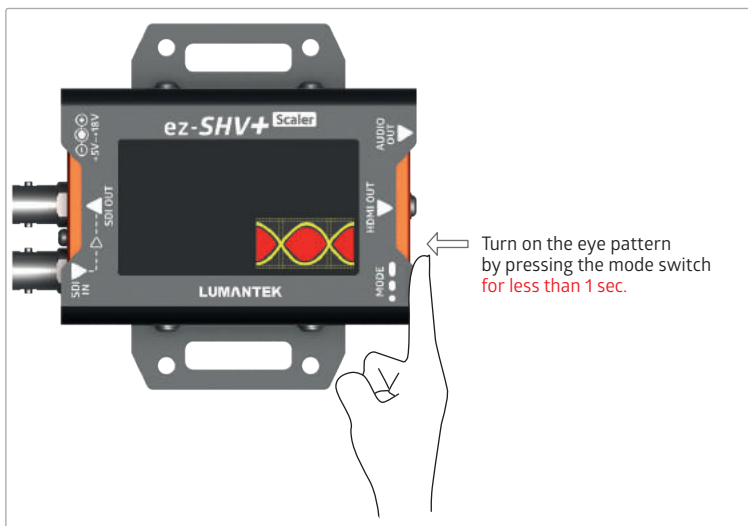
#### ① LCD Display ON/ OFF



## 02. Interface

### LCD Display

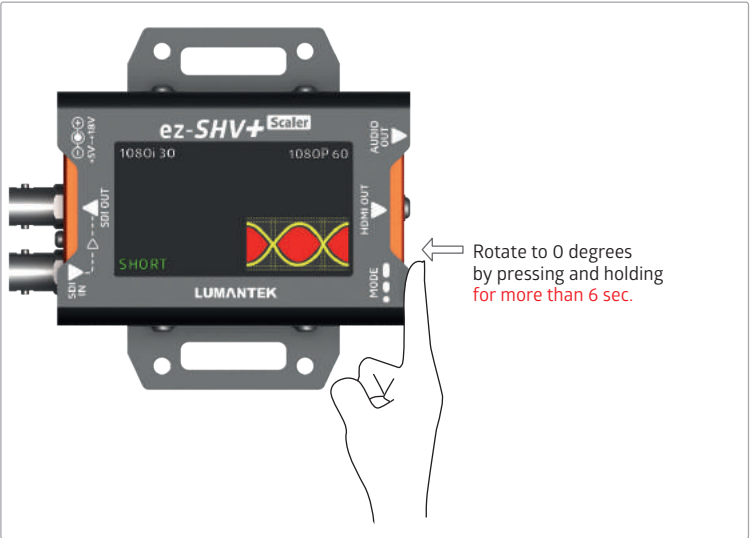
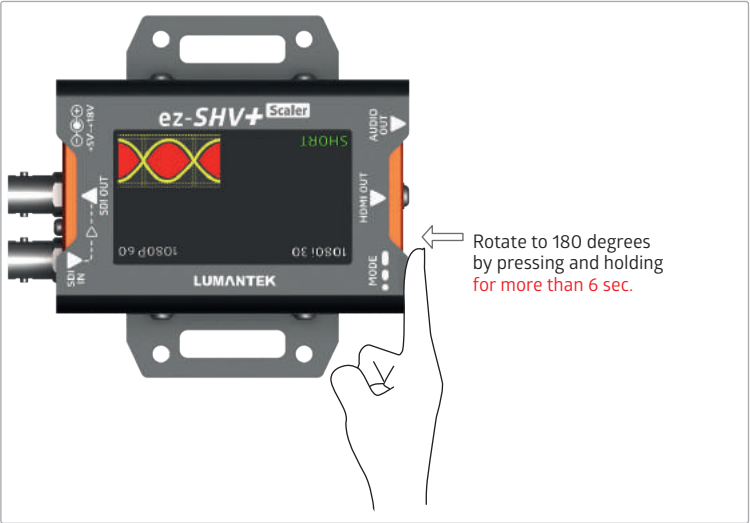
#### ② SDI input eye pattern ON/ OFF



## 02. Interface

### LCD Display

③ LCD monitor rotation (by 0 or 180 degrees)



### 03. Product Configuration

ez-SHV+



AC to DC adapter



Adapter specifications

AC in : AC100 to 240V,50/60Hz

DC out : DC12V, 1A

## 04. Technical Specifications

ez-SHV+

Data Input	Connections
SDI Video Input: SD/HD/3G-SDI (BNC 75Ω) x1 Video Formats: <ul style="list-style-type: none"><li>- 720x480i@59.94/60</li><li>- 720x576i@50</li><li>- 1280x720p@50/59.94/60</li><li>- 1920x1080i@50/59.94/60</li><li>- 1920x1080p@23.94/24/25/29.97/30</li><li>- 1920x1080p@50/59.94/60 (3G-SDI Level-B not supported)</li></ul>	Power : DC Power Input (DC Jack) x1 DIP Switch : (6 Pole) x1 Video In/Out Resolution, Video Output Ratio, LCD Brightness MODE : (Push Switch) x1 LCD ON/OFF, Menu Selection
Data Output	Display
SDI LOOP Output: SD/HD/3G-SDI (BNC 75Ω) x1 Audio Output: Stereo Jack x1 HDMI Video Output: SD/HD/3G (HDMI Type A) x1 Video Formats: <ul style="list-style-type: none"><li>- 720x480i@59.94 (DIP SW : 1111)</li><li>- 720x576i@50 (DIP SW : 0111)</li><li>- 1280x720p@50 (DIP SW : 1011)</li><li>- 1280x720p@59.94 (DIP SW : 0011)</li><li>- 1280x720p@60 (DIP SW : 1101)</li><li>- 1920x1080i@50 (DIP SW : 0101)</li><li>- 1920x1080i@59.94 (DIP SW : 1001)</li><li>- 1920x1080i@60 (DIP SW : 0001)</li><li>- 1920x1080p@23.98 (DIP SW : 1110)</li><li>- 1920x1080p@24 (DIP SW : 0110)</li><li>- 1920x1080p@25 (DIP SW : 1010)</li><li>- 1920x1080p@29.97 (DIP SW : 0010)</li><li>- 1920x1080p@30 (DIP SW : 1100)</li><li>- 1920x1080p@50 (DIP SW : 0100)</li><li>- 1920x1080p@59.94 (DIP SW : 1000)</li><li>- 1920x1080p@60 (DIP SW : 0000)</li></ul>	2.7 inch TFT LCD : Input Video Display, Input SDI Eye Pattern, In/Output Video Resolution Display, Input Cable Length
	Electrical
	Power Input: DC +5V to +18V Power Consumption: 3W(max.) Operation Temperature: 0~45°C
	Physical
	Dimension: 86.3x57.2x26.6 (include connector) Weight: 0.3 kg(typ.)

LUMANTEK CUSTOMER SERVICES

[gs@lumantek.co.kr](mailto:gs@lumantek.co.kr)

TEL(Dir) : +82-2-6947-7429

FAX: +82-2-6947-7440

**LUMANTEK**